

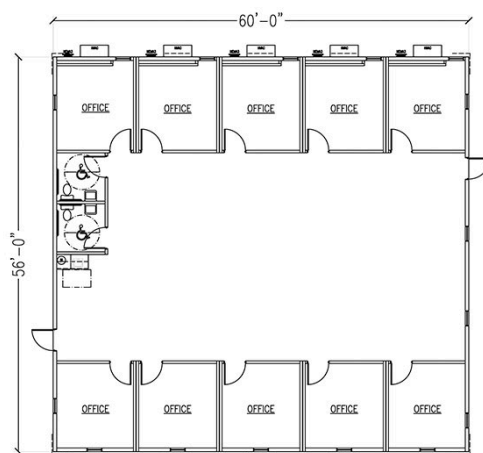


# 10 OFFICES 2 RESTROOMS

MODEL# OCUFX10W

NEW 60' x 56' BOXXPlex modular office complex

- 3,360 square feet
- 10 offices
- 2 restrooms
- Programmable climate control
- High-quality exterior and interior finishes
- For lease and sale!



# Specifications

Square Feet	3,360	Detailed Layout Description	Office size - 12' x 12' Open area - Can be used for cubicles Restroom - Single-user
Size	60' x 56'	Height (Ground Level to Roof)	Single story
Exterior Finish	Smart Panel	Roofing Material	45 mil EPDM
Interior Wall Finish	VCG	Flooring Material	VCT or Carpet
Lighting	LED with occupancy sensors	HVAC Thermostat	Programmable
Restrooms	2	Office (qty)	10
Electrical	Single Phase	Plumbing	Restrooms, kitchenette
Construction Type	Built to international building code	Furnishings	Rentable furniture packages available

## Recommended Add-ons

- Stairs, Ramps, & Entryways
- Office Package
- Kitchen Package
- Seating Package

## Benefits and Applications:

- **Instant Workspace** - Provides fully functional office space that can be quickly delivered, and installed.
- **Flexibility** - Offers a range of layouts and configurations, including private offices, restrooms, meeting rooms, and open workspaces, tailored to fit your business's unique needs.
- **Cost-Effectiveness** - Available for lease or purchase, modular office complexes are an affordable solution for both temporary and permanent space needs.
- **Compliance and Quality** - Built in the U.S. to meet strict code compliance standards, ensuring a safe and durable work environment.

## Potential Use Cases

This BOXXPlex modular office complex is ideal for:

- Commercial & Industrial offices
- Government agencies
- Educational institutions
- Factory offices
- Disaster relief
- Any situation where a durable and functional office setup is necessary

## Additional Considerations:

- **Delivery and Setup** - Delivery and setup costs may vary depending on location and complexity.
- **Permits** - Depending on your location, you might need to obtain permits.
- **Lease vs. Purchase** - This unit can be leased or purchased depending on your needs or budget.

By considering these aspects, you can determine if a 60' x 56' modular office complex is the right solution for your workspace needs.

## Frequently Asked Questions

---

**How quickly can modular office complexes be delivered and installed?** ⊕

---

**Can modular office complexes be used for both temporary and permanent solutions?** ⊕

---

**What comes with the building?** ⊕

---

**How much do modular office complexes cost?** ⊕

---

**How many employees can a modular office complex accommodate?** ⊕