

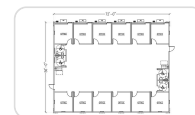
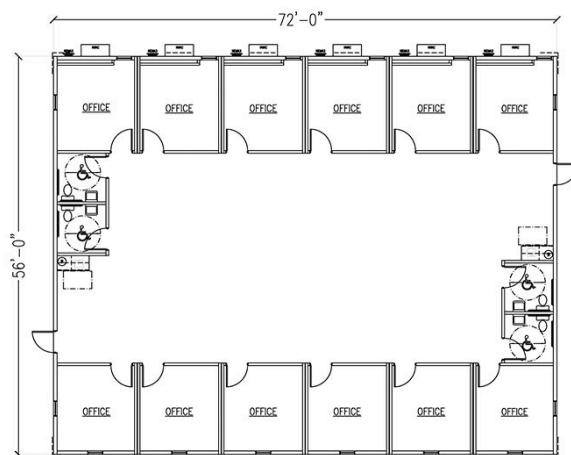


12 OFFICES 4 RESTROOMS

MODEL# OCUFX12W

NEW 72' x 56' BOXXPlex modular office complex

- 4,032 square feet
- 12 offices
- 4 restrooms
- Programmable climate control
- High-quality exterior and interior finishes
- For lease and sale!



Specifications

| | | | |
|----------------------|--------------------------------------|-------------------------------|---|
| Square Feet | 4,032 | Detailed Layout Description | Office size - 12' x 12' Open area - Can be used for cubicles Restroom - Single-user |
| Size | 72' x 56' | Height (Ground Level to Roof) | Single story |
| Exterior Finish | Smart Panel | Roofing Material | 45 mil EPDM |
| Interior Wall Finish | VCG | Flooring Material | VCT or Carpet |
| Lighting | LED with occupancy sensors | HVAC Thermostat | Programmable |
| Restrooms | 4 | Office (qty) | 12 |
| Electrical | Single Phase | Plumbing | Restrooms, kitchenette |
| Construction Type | Built to international building code | Furnishings | Rentable furniture packages available |

Recommended Add-ons

- Stairs, Ramps, & Entryways
- Office Package
- Kitchen Package
- Seating Package

Benefits and Applications:

- **Instant Workspace** - Provides fully functional office space that can be quickly delivered, and installed.
- **Flexibility** - Offers a range of layouts and configurations, including private offices, restrooms, meeting rooms, and open workspaces, tailored to fit your business's unique needs.
- **Cost-Effectiveness** - Available for lease or purchase, modular office complexes are an affordable solution for both temporary and permanent space needs.
- **Compliance and Quality** - Built in the U.S. to meet strict code compliance standards, ensuring a safe and durable work environment.

Potential Use Cases

This BOXXPlex modular office complex is ideal for:

- Commercial & Industrial offices
- Government agencies
- Educational institutions
- Factory offices
- Disaster relief
- Any situation where a durable and functional office setup is necessary

Additional Considerations:

- **Delivery and Setup** - Delivery and setup costs may vary depending on location and complexity.
- **Permits** - Depending on your location, you might need to obtain permits.
- **Lease vs. Purchase** - This unit can be leased or purchased depending on your needs or budget.

By considering these aspects, you can determine if a 72' x 56' modular office complex is the right solution for your workspace needs.

Frequently Asked Questions

How quickly can modular office complexes be delivered and installed? ⊕

Can modular office complexes be used for both temporary and permanent solutions? ⊕

What comes with the building? ⊕

How much do modular office complexes cost? ⊕

How many employees can a modular office complex accommodate? ⊕