

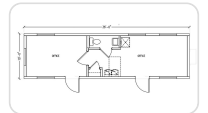
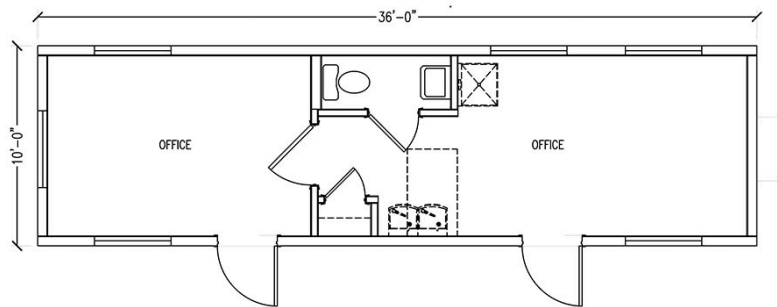


10' X 36' MOBILE OFFICE

MODEL# SO1036W

10' x 36' Mobile Office Building | Construction Office Trailer

- 360 square feet
- 1 office
- 1 restroom
- Meeting Area
- For lease and sale!



Specifications

Square Feet	360	Detailed Layout Description	Office size - 16' x 9' Meeting area size - 19' x 9' Restroom size - 3' x 6'7"
Size	10' 6" X 36' 6"	Height (Ground Level to Roof)	13' 6"
Exterior Finish	Ribbed Steel 0.29 ga.	Roofing Material	45 mil EPDM
Interior Wall Finish	VCG (Vinyl-Covered Gypsum)	Flooring Material	VCT (Vinyl-Covered Tile)
Lighting	LED with occupancy sensors	HVAC Quantity	1 (electric), 2-Ton Wall Hung Unit, 10 kW Heat
HVAC Thermostat	Programmable	Restrooms	1
Office (qty)	1	Electrical	100 Amp Panel (120/240 single phase)
Plumbing	Pre-stubbed with 1" spigot	Construction Type	Non-coded mobile office
Furnishings	Rentable furniture packages available		

Recommended Add-ons

- Steps
- Canopy
- Office Package
- Kitchen Package
- Basic Seating Package
- Window Security Screens
- Skirting
- Internet Connectivity Package & Wi-Fi
- Mud Mats
- Boot Scraper
- Boot Rack
- Plan Table

Requirements

- Electrical - Single Phase
- Water - 1" Spigot
- Sewer - 2" Waste Line

Benefits and Applications:

- **Instant Workspace** - Provides a fully functional office space that can be delivered and set up quickly, ideal for temporary projects, construction sites, or overflow office needs.

- **Flexibility** - Can be customized to meet your specific needs with options for layout, furniture and amenities.
- **Durability** - Built to withstand weather and wear and tear, offering a long-lasting solution.
- **Security** - Steel doors and locks provide security for your equipment and valuables.
- **Portability** - Can be easily relocated to different sites when needed.

Potential Use Cases

This mobile office solution is ideal for:

- Construction companies
- Event organizers
- Government agencies
- Educational institutions
- Businesses requiring temporary or remote workspaces
- Any situation where a quick and functional office setup is necessary





Additional Considerations:

- **Delivery and Setup** - Delivery and setup costs may vary depending on location and complexity.
- **Permits** - Depending on your location, you might need permits for placing a mobile office.
- **Rental vs. Purchase** - These units can be rented or purchased depending on your needs or budget.

By considering these aspects, you can determine if a 10x36 mobile office is the right solution for your workspace needs.

Frequently Asked Questions

Prefer talking on the phone?

Are buildings internet-ready?	
What site prep do I have to do for my mobile field office?	
How much do a mobile office cost?	
Do I need a building permit for a portable construction office?	
Can I move the building that I'm renting or leasing?	